

Valve Type Flour Bagging Machine & Single Weigh Hopper 10/25/50 Kg

Genç Degirmen
MILLING MACHINERY

Excellent Milling Properties...

GENERAL FEATURES:

Turbine type ventilated bag filling machine is used for packing the products at medium and high density in ventilated craft-polyethylene bags. It offers the most suitable solution for packing fine and ground products with medium and high density fluidity.

The dosing system of ventilated filling machines can be of different types, depending on the characteristics of the material being bagged. All the process is automatic after the bag is inserted into the filling port by the operator. The filling speed of the machine may vary depending on the product density and fluidity. Thanks to its rotating structure, it offers high-capacity operation performance. It automatically adjusts the lower buffer height according to bag size.

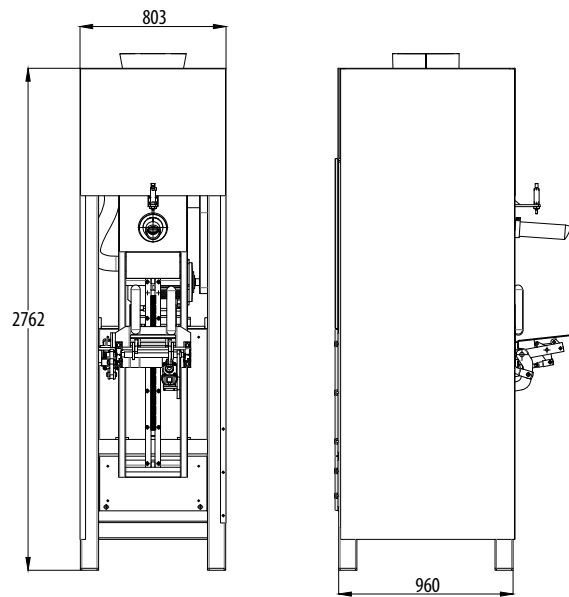


STANDARD FEATURES:

- Weighing system with electronic featured loadcell
- Heavy duty profile frame
- Adjustable bag height
- Pneumatic control system
- Automatic filling port cleaning system with air
- Easy to use feature thanks to PLC and LCD user screen
- Easy-to-change Hardox type turbine pallets
- Automatic filled port cleaning system with
- Automatic bag drop system with minimum labor
- Connection port for the filter (1,000 m³ / h capacity, suitable for suction)
- With electronic weighing control unit (taking tare, resetting)
- Long-lasting bedding in the turbine
- Additional sub-frame application for bag filling conveyor
- Adjusting feet for chassis balancing

Valve Type Flour Bagging Machine & Single Weigh Hopper 10/25/50 Kg

Product Data Sheet



Product Code	Weighing Accuracy	System Pressure	Air Supply	Power Supply	Power	Bag Type	Weighing Range	Weighing Capacity
102550	± % 0,5	6-8 Bar	20m ³ /min	380 VAC / 50-60 Hz / 3F	7,5 kW	Craft-Polietilen Bag	10-25-50 Kg	50 Kg - 250 Package 12.500 Kg
								25 Kg - 300 Package 7.500 Kg
								10 Kg - 350 Package 3.500 Kg